




Black Rod Close, Hayes, UB3

Guide Price £530,000

 3  2  1



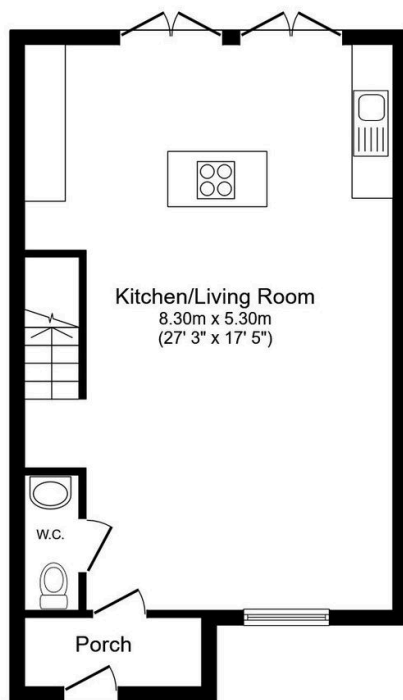
END OF TERRACE HOUSE - 3 BEDROOM - 1 BATHROOM - 1 W/C - OPEN PLAN LIVING ROOM / KITCHEN - PRIVATE FRONT AND REAR GARDEN - FREEHOLD

Henry Wiltshire is delighted to present this modern, end-of-terrace, 3-bedroom house, perfect for families, first-time buyers, and investors alike.

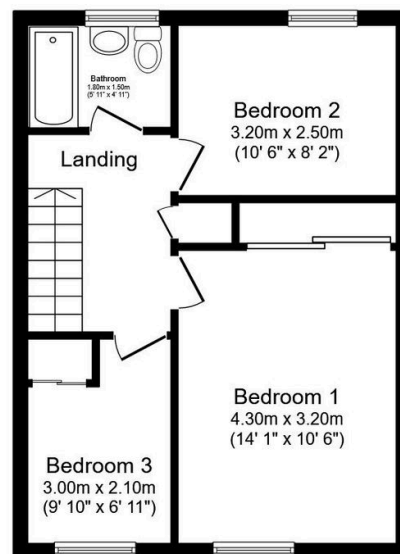
The ground floor features a spacious open-plan kitchen and reception area with sleek wooden flooring throughout, offering a contemporary and inviting living space. Additionally, the ground floor includes a convenient W/C and direct access to the rear garden, perfect for outdoor relaxation. Upstairs, the first floor comprises two generously sized double bedrooms and a comfortable single bedroom, providing ample space for a growing family.

Situated in a prime location, this property is just 0.3 miles from Hayes and Harlington Station, ensuring excellent transport links, and only 0.4 miles from Asda Supermarket, making everyday shopping a breeze.

- End Of Terrace
- One Bathroom
- Private Rear Garden
- Freehold
- 0.3 miles to Hayes & Harlington Station
- Three Bedroom
- One W/C
- Private Front Garden
- Modern
- 0.4 miles to Asda Hayes Superstore



Ground Floor



First Floor

Total floor area 88.8 m² (956 sq.ft.) approx

This floor plan is for illustrative purposes only. It is not drawn to scale. Any measurements, floor areas (including any total floor area), openings and orientation are approximate. No details are guaranteed, they cannot be relied upon for any purpose and they do not form part of any agreement. No liability is taken for any error, omission or misstatement. A party must rely upon its own inspection(s). Powered by www.focalagent.com